

oakheart

£185,000

Offers In Excess Of
Hudson House, Leigh-On-Sea



Welcome to Hudson House, a stylish top-floor apartment located in the charming area of Leigh-On-Sea. This nearly new flat, built in 2020, offers a modern living experience with a well-designed layout that maximises space and comfort. Spanning 538sqft, the property features a welcoming reception room, a comfortable bedroom, and a contemporary bathroom.

The heart of the home is the sleek kitchen, equipped with integrated appliances that cater to all your culinary needs. The

apartment benefits from gas central heating and double glazing, ensuring warmth and energy efficiency throughout the year.

One of the standout features of this property is its prime location. Just a short stroll away, you will find Chalkwell Station, providing excellent transport links, as well as the vibrant Leigh Broadway, known for its array of shops, cafes, and restaurants.

Residents of Hudson House also enjoy access to beautifully

maintained communal gardens, perfect for relaxing outdoors, along with private external storage for added convenience. This apartment is ideal for those seeking a modern lifestyle in a desirable area. Don't miss the opportunity to make this lovely flat your new home.

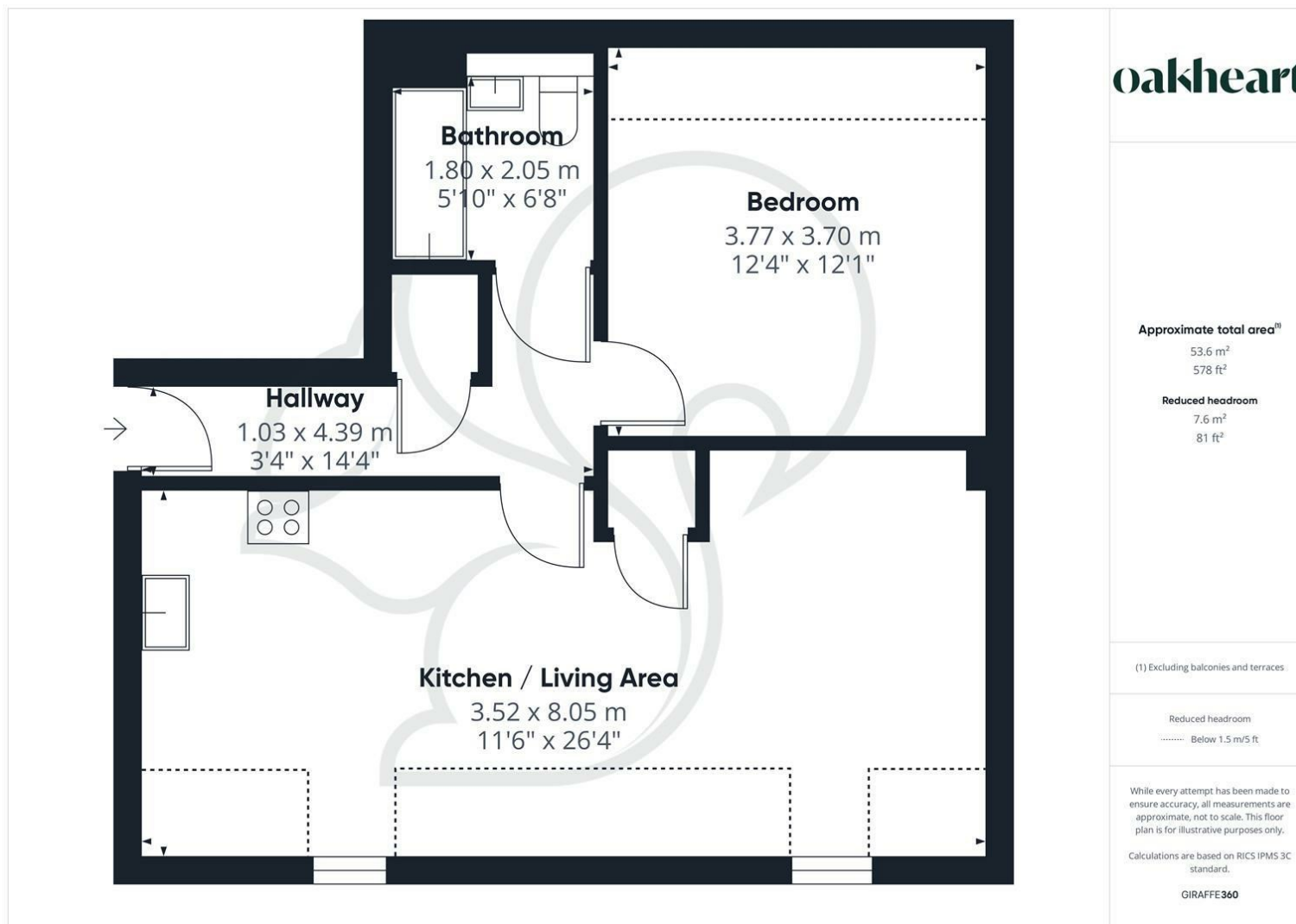
Ground rents circa £350 per year per apartment.

Contact Oakheart Property to arrange your viewing today.





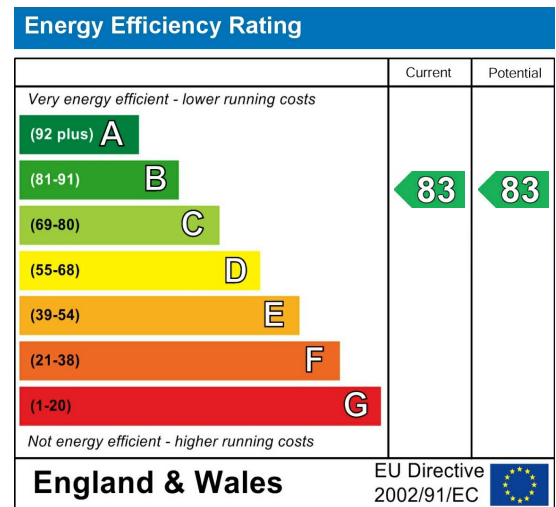




Local Authority:
Southend-On-Sea City Council

Tenure:
Leasehold

Council Tax Band:
B



Agents Note: Whilst every care has been taken to prepare these particulars, they are for guidance purposes only. All measurements are approximate and are for general guidance purposes only and whilst every care has been taken to ensure their accuracy, they should not be relied upon.